

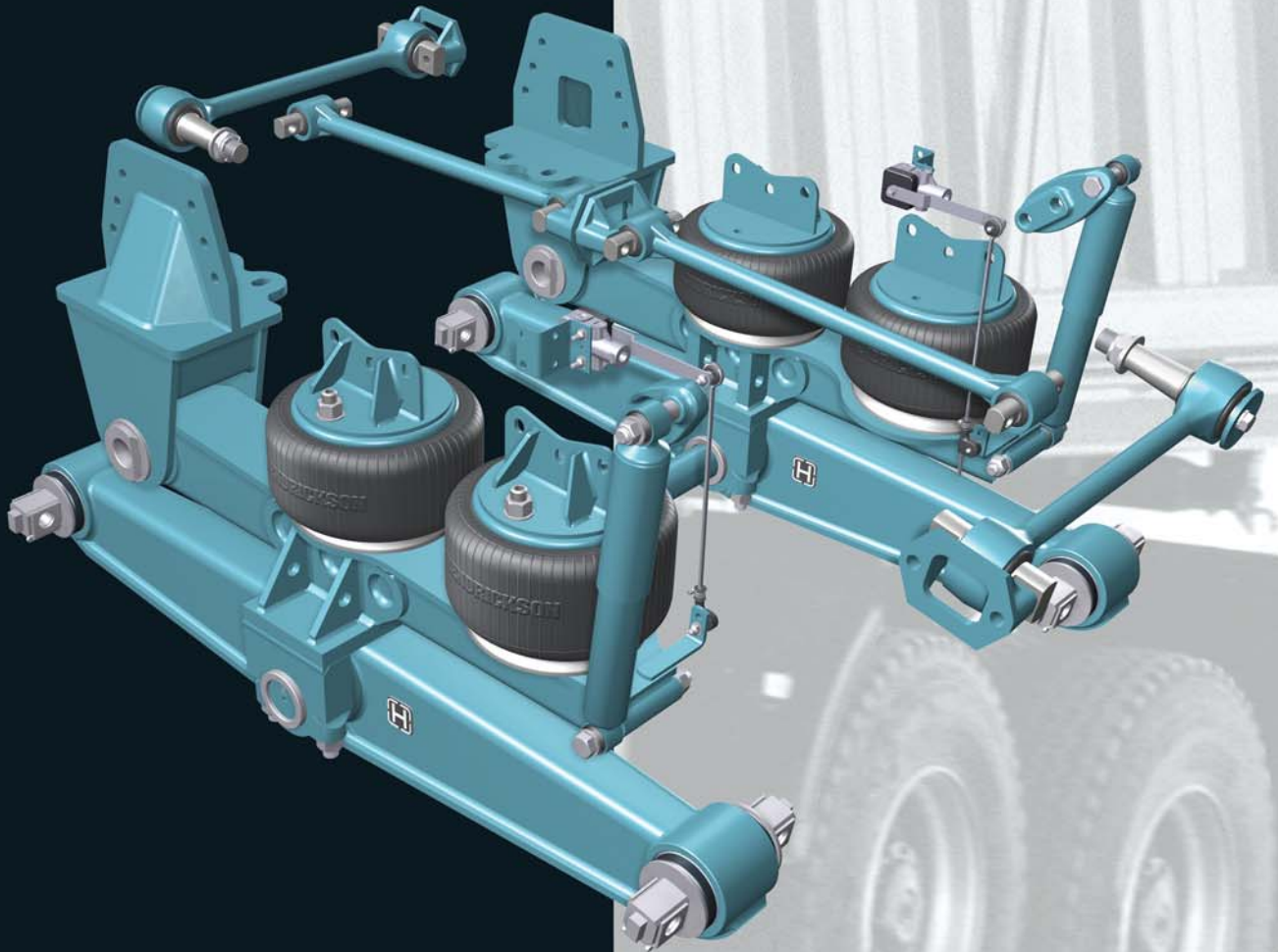
MAXIMIZE PAYLOAD

PRODUCTIVITY AND

COMFORT WITH AR2™



Air Ride Walking Beam
Suspension



For The Road Ahead™



AR2™ SPRING AIR

Suspension weight is reduced through innovative design, higher strength materials and advanced manufacturing methods for greater payloads and improved durability. AR2™ delivers the reliability and quality you've come to expect from Hendrickson — the leader in suspension technology and the experts in walking beams.

LONGITUDINAL TORQUE RODS

Engineered to optimize resistance to axle wind-up during acceleration and braking.

TRANSVERSE TORQUE RODS

Heavy-duty transverse rods ensure maximum lateral axle control and straight line suspension stability.

HEIGHT CONTROL VALVE

Zero delay operation with minimum dead band helps maintain constant ride height.

HEAVY-DUTY SHOCK ABSORBERS

Standard for optimal ride and cargo / body protection.

LIGHTWEIGHT FRAME HANGER

Controls acceleration, braking and vertical forces for longer hanger and bushing life.

TRAILING ARM AND SADDLE ASSEMBLY

Replaces spring and saddle assembly of existing RT™/RTE™. The heavy-duty trailing arm and saddle assembly provides lighter weight, good articulation and optimal ground clearance.

LARGE VOLUME AIR SPRINGS

Rolling lobe design provides variable spring rates and delivers superior ride quality.

CROSS TUBE

Made from rigid steel to deliver lateral suspension support and enhanced stability.

BAR PIN RUBBER END BUSHING

Provides longer bushing life and adds axle alignment capability. Three-piece adapter-beam end connection also available.

EQUALIZING BEAM / WALKING BEAM

AR2 is compatible with most Hendrickson RT/RTE walking beams. If required, rigid forged beams or robust lightweight fabricated beams are available separately.

Hendrickson beams are highly engineered for efficiency and extensively tested for durability.

MAXIMIZE DRIVER COMFORT

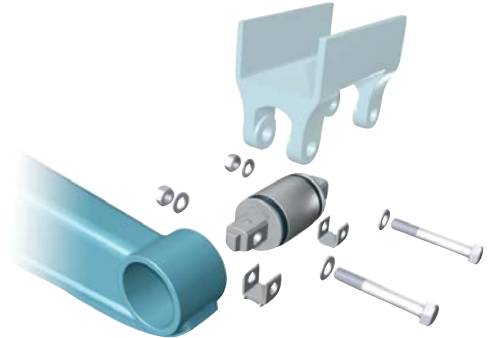
“... a major improvement
... The ride is 100% better
loaded or empty...”

— Bill Church, Driver
Mark Ward Trucking

The Hendrickson AR2™ gives you a better ride and improved suspension performance by converting your RT™ / RTE™ suspension into a highly engineered and lighter weight walking beam air ride suspension. The air spring system in AR2 absorbs the load and road inputs — delivering the preferred combination of empty-ride and loaded stability for vocational applications.

MAXIMIZE UPTIME

- Improved ride reduces road shock and vibration to the vehicle for longer service life and fewer repairs to the cab, chassis and body equipment
- Air springs provide long service life and easy replacement
- Bar pin rubber end bushing extends service life and provides alignment capability. Rubber bushings enhance articulation and help reduce load on mating components
- Hendrickson parts and service available at thousands of locations worldwide
- Comprehensive technical support



MAXIMIZE TRACTION



AR2 provides the versatility for demanding job-sites or off-road conditions. When loaded, AR2 delivers up to 14 inches* of diagonal wheel articulation to keep load on all drive wheels. Unloaded articulation varies with vehicle configuration and empty body weight.

AR2 CONVERSION

You still retain benefits from the Hendrickson RT/RTE, but now you get the additional benefit of a smooth riding air suspension from the world's leading manufacturer of truck and trailer air suspension systems. Available in conversion or complete kit form, the AR2 can be installed by service centers and OEM dealerships who want to give their customers a new suspension solution.

- **What's in the Conversion Kit?** — Two new trailing arm and saddle assemblies, shock absorbers, heavy-duty transverse torque rods, height control valves, four air springs, frame hangers, detailed installation instructions, a parts list and a decal letting others know your truck is Hendrickson air ride equipped.
- Undrilled frame hangers are included to accommodate numerous hole patterns.
- **What remains from the RT/RTE?** — The existing beam assembly, cross tube and longitudinal torque rods. The AR2 will fit most RT/RTE suspensions up to 46,000 pound capacity.

Contact Hendrickson Sales Engineering at 630.910.2800 to request a suspension application form. Complete the form and return to Hendrickson for approval to help ensure AR2 is the correct suspension for the vehicle and application.

* Suspension articulation may exceed vehicle's capability and may be limited by vehicle manufacturer; vehicle manufacturer installed axle stops may restrict suspension's articulation.

AR2™ SPECIFICATIONS

	CONVERSION KIT ¹		COMPLETE ASSEMBLY	
	AR2 400	AR2 460	AR2 400	AR2 460
Installed Weight ² (52 in. axle spacing)	664 lbs.	669 lbs.	1,079 lbs.	1,084 lbs.
Suspension Rating ³	40,000 lbs.	46,000 lbs.	40,000 lbs.	46,000 lbs.
GVW Approval ⁴	60,000 lbs.	66,000 lbs.	60,000 lbs.	66,000 lbs.
GCW Approval	145,000 lbs.	160,000 lbs.	145,000 lbs.	160,000 lbs.
Site Travel Rating ⁵	46,000 lbs.	50,000 lbs.	46,000 lbs.	50,000 lbs.
Diagonal Articulation ⁶	14 in.	14 in.	14 in.	14 in.
Ride Heights	9.5 in., 10.5 in.	9.5 in., 10.5 in.	9.5 in., 10.5 in.	9.5 in., 10.5 in.
Axle Spacing	52 in., 54 in.	52 in., 54 in.	52 in., 54 in.	52 in., 54 in.
Lift Axle	See Below ⁷	See Below ⁸	See Below ⁷	See Below ⁸

AR2 is approved for vocational truck applications such as dump under 18 feet, crane/boom and platform applications. Contact Hendrickson for approval of additional applications.

- ¹ Conversion kit — if existing RT / RTE suspension includes bronze center bushings, they must be replaced with rubber center bushings. Bronze center bushings are incompatible with transverse torque rods.
- ² *Conversion kit installed weight includes* — torque rods, axle brackets and frame brackets.
Complete assembly installed weight includes — fabricated equalizing beam assembly, cross tube, torque rods, axle brackets and frame brackets.
NOTE: Any comparison to other suspensions should consider all of these components, including axle brackets.
- ³ AR2 is also approved for vehicles equipped with aluminum beams up to a 38K maximum capacity.
- ⁴ Contact Hendrickson for applications that may exceed GVW approval ratings.
- ⁵ Site Travel Rating — Ratings are limited to no more than 5% of vehicle operation at speed not to exceed 5 mph. Site travel ratings are consistent with published axle manufacturer's limitations. Axle and suspension site travel specifications must not be exceeded.
- ⁶ Suspension articulation may exceed vehicle's capability and may be limited by vehicle manufacturer; vehicle manufacturer installed axle stops may restrict suspension's articulation.
- ⁷ No add-on lift axles for 40K applications.
- ⁸ One or more lift axles. Maximum 50,000 lbs. load on suspension for site travel.

“After having AR2 installed, it has performed far superior to the extended leaf and our other suspensions, with an exceptionally smooth ride. With this innovative improvement on the Hendrickson walking beam suspension, we will be upgrading the remainder of our Hendrickson suspensions.”

— Tim Ward, Vice President
Mark Ward Trucking



Hendrickson Genuine Parts provide the same quality components installed in Hendrickson original equipment suspensions — consisting of the same design, construction, performance and durability. There's only one way to maintain and protect your suspension's original performance. Ask for the name that is synonymous with the finest manufactured suspensions in the world — Hendrickson.

www.hendrickson-intl.com



Truck Suspension Systems
800 South Frontage Road
Woodridge, IL 60517-4904 USA

630.910.2800
Fax 630.910.2899